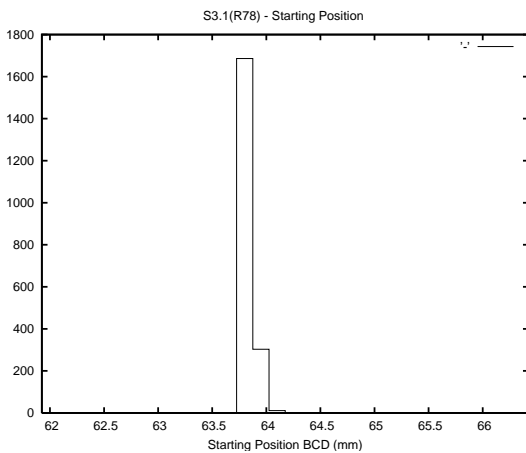


**Target Performance Report - S3.1**  
 Report Generated: September 13, 2015,  
 Last Actuation: 13/09/15 09:58:54

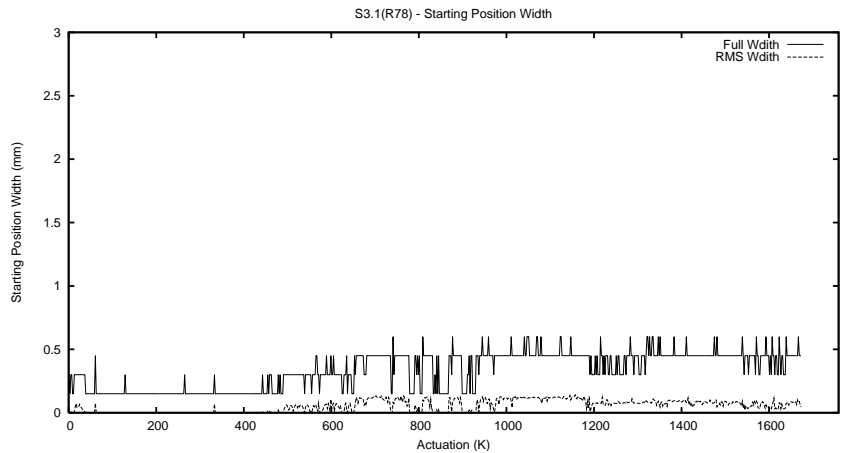
**1 Operation Summary**

	Last Shift	Total
Actuations:	68.0K	1675.1K
Quadrature Count errors:	0	0
Fiber ADC errors:	0	0
BPS errors (during actuation):	0	0
(R78) Gaps > 3s & < 10s:	11	2617
(R78) Gaps > 10s:	3	151
(R78) SP2 Corrections:	69	3531
(R78) Capture Over/Under shoots:	4122/3163	76479/43650

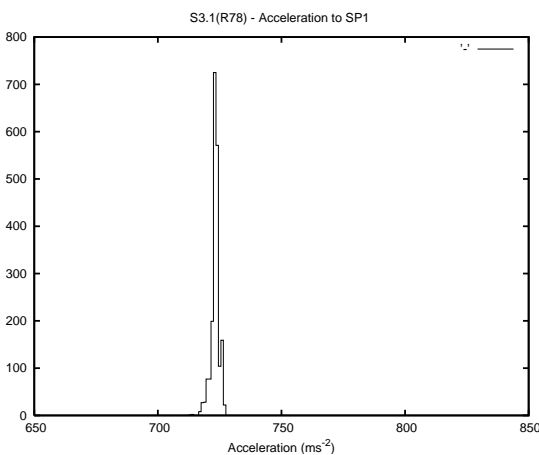
**2 Mechanical Performance**



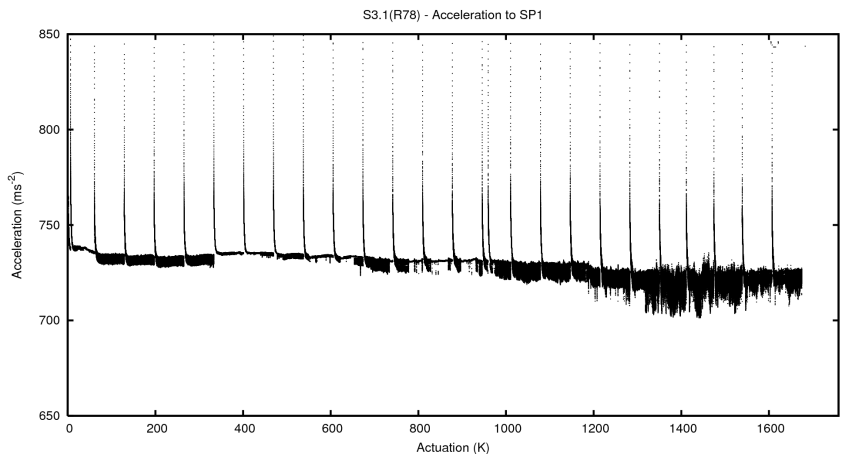
Starting position for the last 2000 actuations.



Starting position width over time.

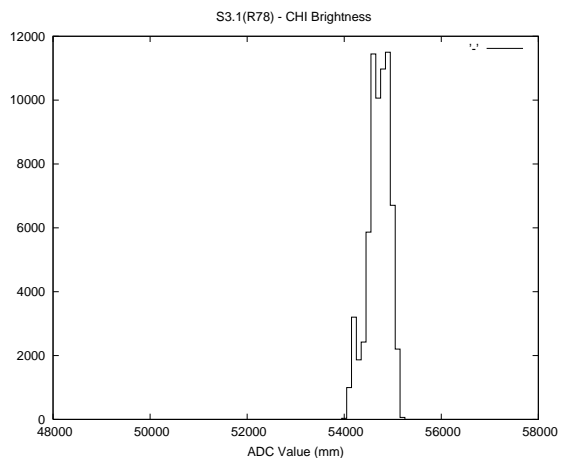
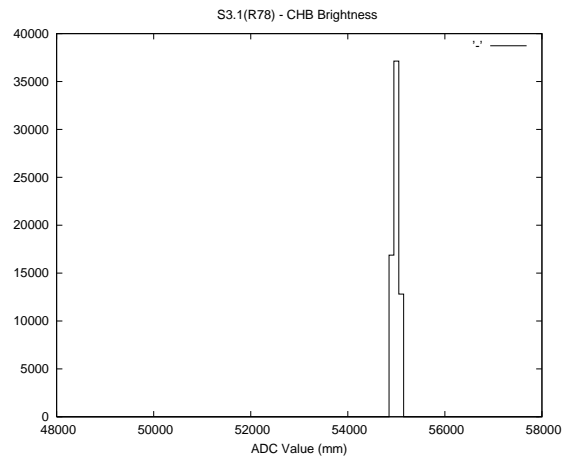
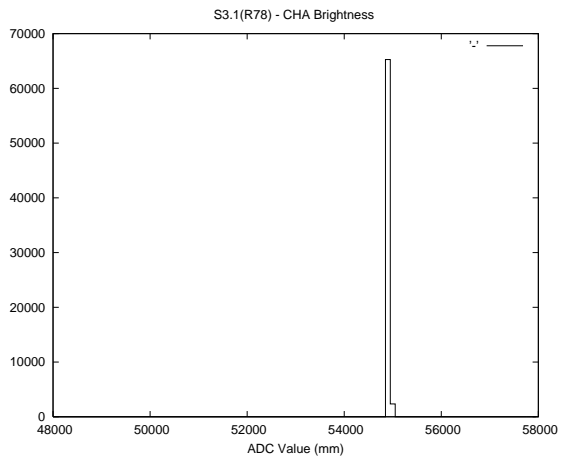


Acceleration for the last 2000 actuations.



Acceleration over time. Normalised to a temperature 45C using the temperature data collected by the system.

### 3 Optical Performance



### 4 BPS Check

