

# Target Performance Report - S1.8

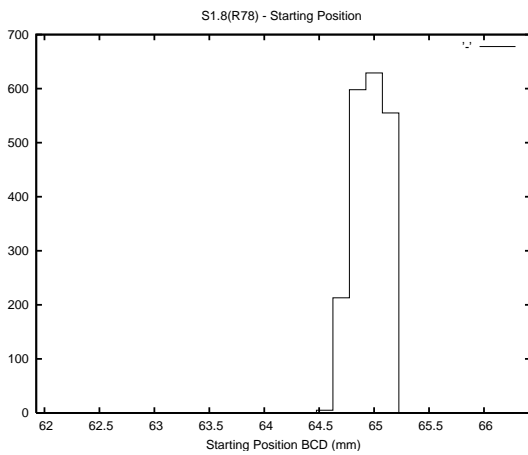
Report Generated: April 17, 2014,

Last Actuation: 17/04/14 02:18:42

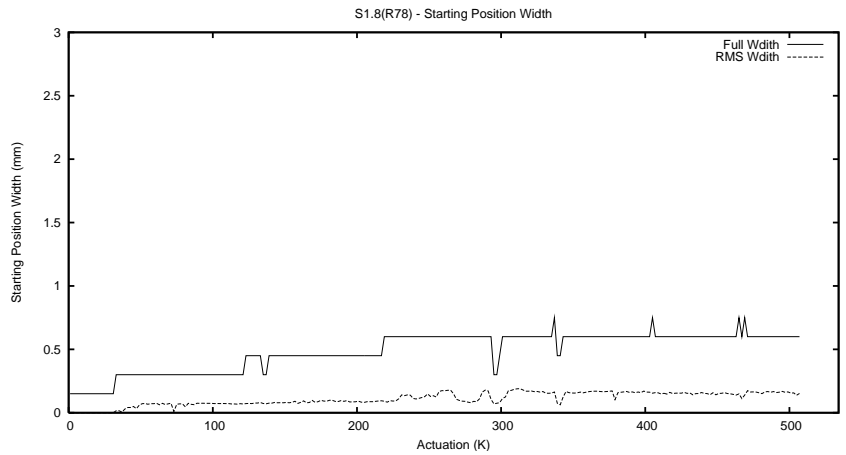
## 1 Operation Summary

|                                  | Last Shift | Total   |
|----------------------------------|------------|---------|
| Actuations:                      | 34.8K      | 508.7K  |
| Quadrature Count errors:         | 0          | 0       |
| Fiber ADC errors:                | 0          | 0       |
| BPS errors (during actuation):   | 0          | 0       |
| (R78) Gaps > 3s & < 10s:         | 0          | 0       |
| (R78) Gaps > 10s:                | 8          | 17      |
| (R78) SP2 Corrections:           | 1          | 20      |
| (R78) Capture Over/Under shoots: | 177/12     | 719/216 |

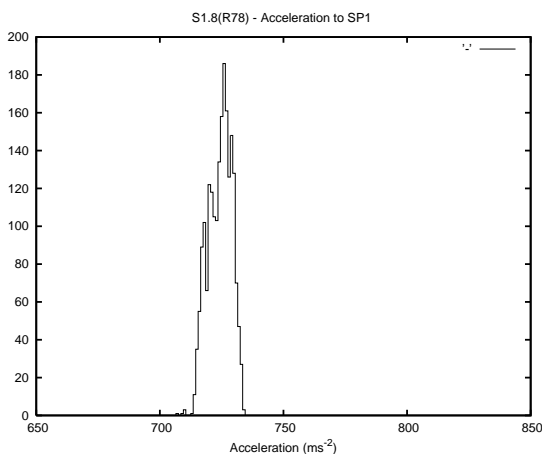
## 2 Mechanical Performance



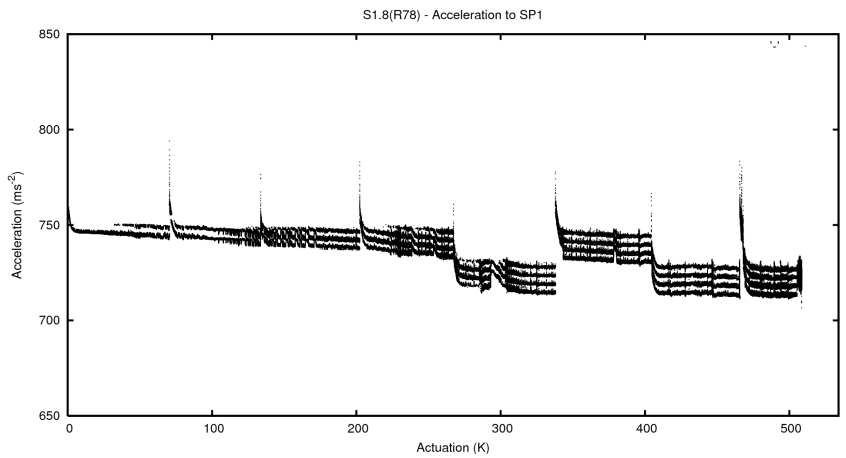
Starting position for the last 2000 actuations.



Starting position width over time.

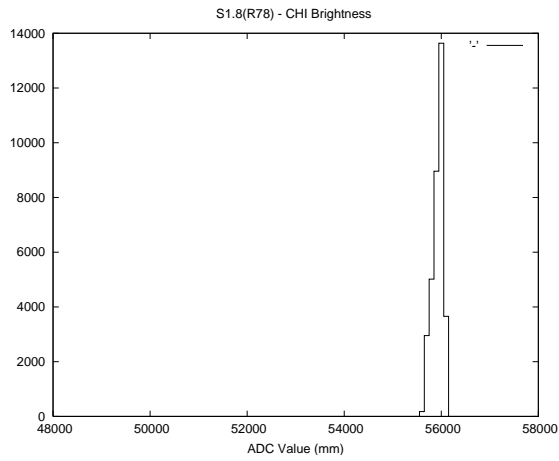
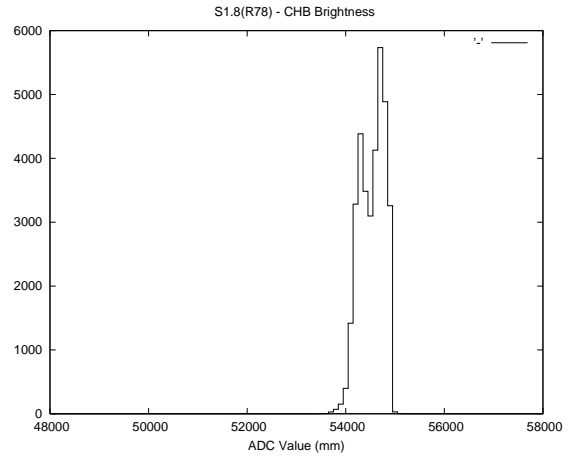
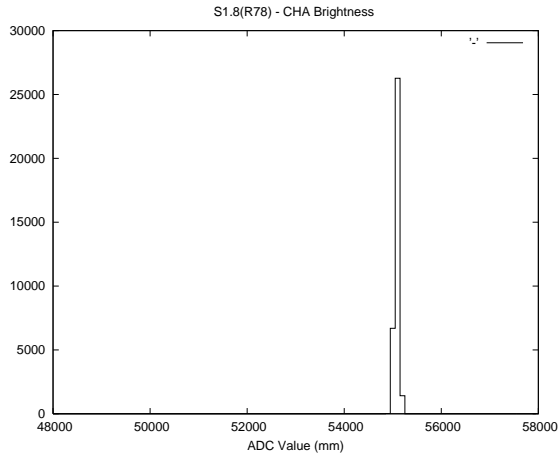


Acceleration for the last 2000 actuations.



Acceleration over time. Normalised to a temperature 45C using the temperature data collected by the system.

### 3 Optical Performance



### 4 BPS Check

