

Target Performance Report - S1.4

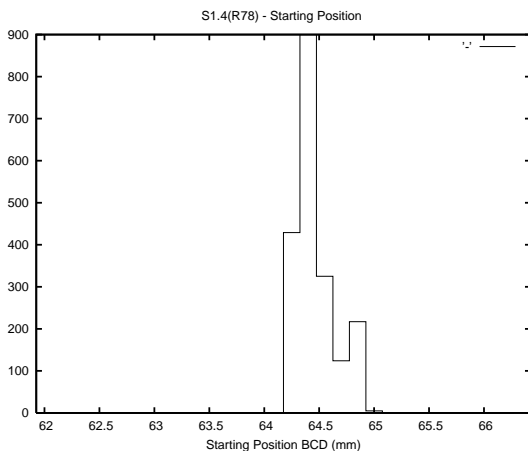
Report Generated: April 15, 2013,

Last Actuation: 15/04/13 08:21:13

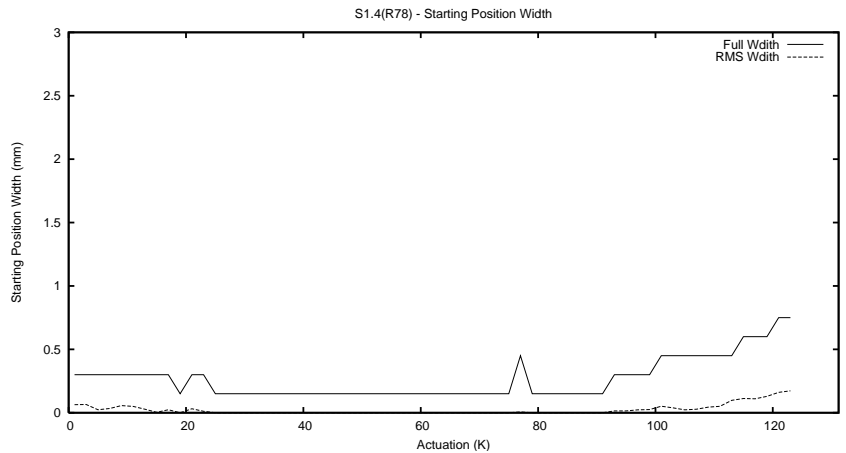
1 Operation Summary

	Last Shift	Total
Actuations:	47.9K	125.0K
Quadrature Count errors:	0	0
Fiber ADC errors:	3	6
BPS errors (during actuation):	1	2
(R78) Gaps > 3s & < 10s:	0	0
(R78) Gaps > 10s:	2	2
(R78) SP2 Corrections:	1	4
(R78) Capture Over/Under shoots:	101/0	101/61

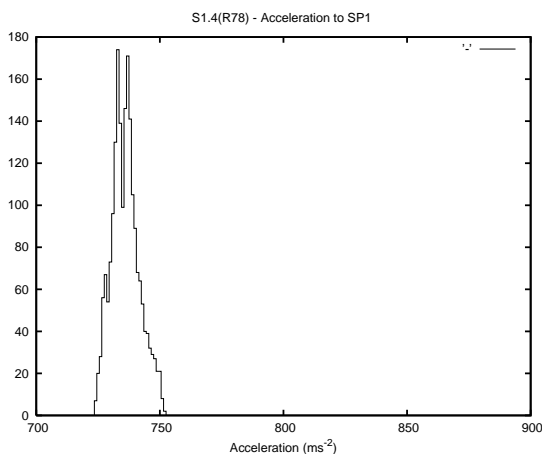
2 Mechanical Performance



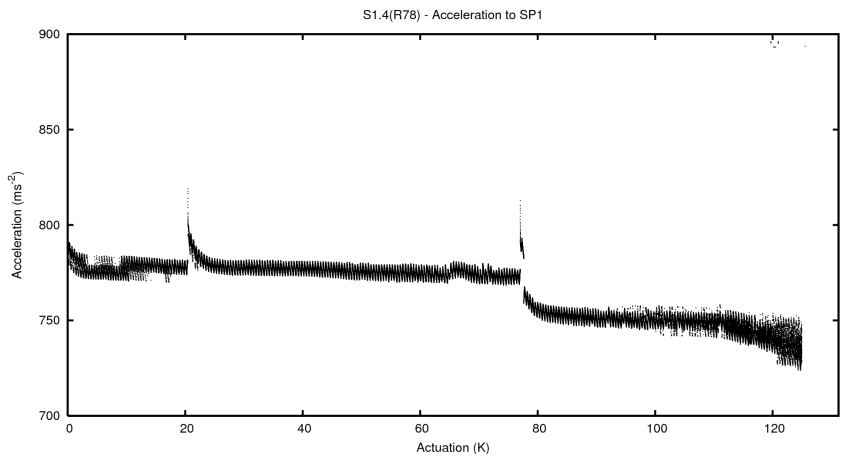
Starting position for the last 2000 actuations.



Starting position width over time.

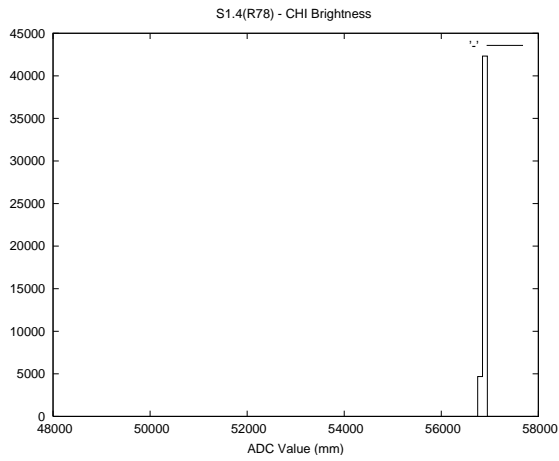
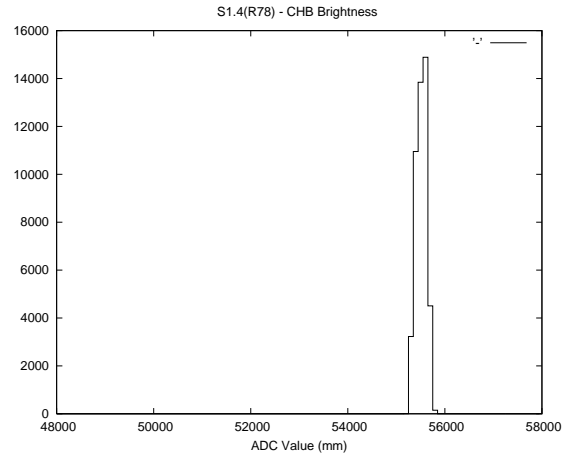
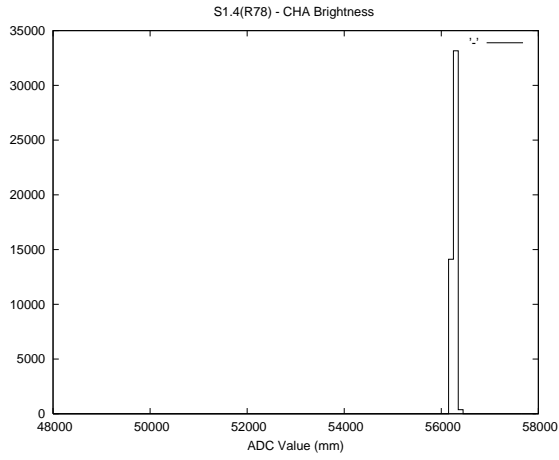


Acceleration for the last 2000 actuations.



Acceleration over time. Normalised to a temperature 45C using the temperature data collected by the system.

3 Optical Performance



4 BPS Check

